

Lab Companion

Water Immersion Test Chamber

IPX7-504

Custom Solution

Brief Introduction



As a special equipment for testing the waterproof performance of the product in water, the product is tested by simulating the water environment at different depths, the performance of the product under flooded conditions, in particular the sealing performance of the shell. It is widely used in many fields such as electronics, automobile, medical, to ensure that the product can resist the intrusion of water in actual use, so as to ensure the safety and service life of the product.

Lab Companion

Technical Features:

Dimensions (mm)	Width	Height	Depth
Useful	600	1400	600
Overall	900	2300	680

1. Power supply specifications: AC 220 V, 50/60 HZ, 1 ϕ 3 wire
2. Rated current: AC 5.5 A, power 1.2 KW

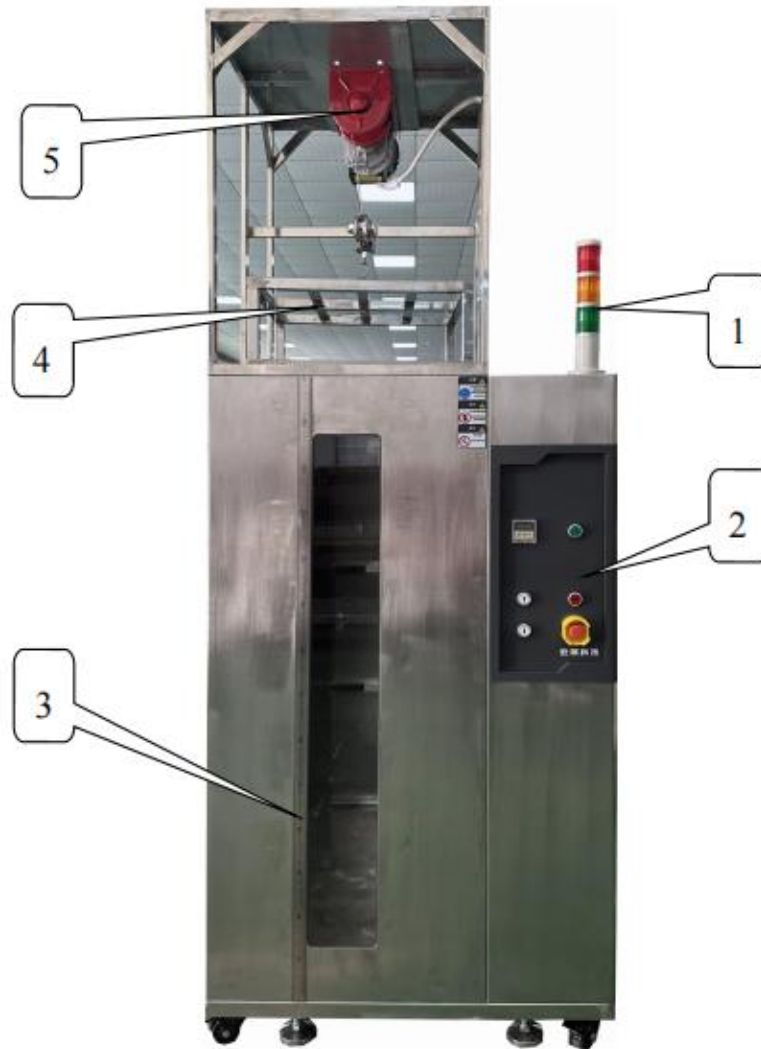
This machine is dedicated to the above marked power supply, please use according to the rated power distribution. If the use area is changed, please contact our company. Service phone 400-628-2786.

3. Suitable environment for using: 15°C~35°C 25%~75%
4. Keep the surface of the test instrument and equipment clean and abnormal. The test chamber is well ventilated and the floor is clean and tidy.
5. Confirm that the test sample is intact and meets the experimental requirements.
6. Open the water valve and add water into the chamber (pay attention to the water level).
7. Firmly install the test sample on the hook sample bracket at the top of the box according to the state of work, and then put the product into the appropriate position in the water. (The desired position can be adjusted according to the steel rule.
8. Time setting of test parameters
 - 8.1. Turn on the power switch on the control panel.
 - 8.2. Firstly, select the time unit (H.M.S) to represent hour, minute and second respectively on the timing controller of the control panel, and then set the time required for the test by the number +, -(plus and minus) buttons.

Lab Companion

Appearance Introduction and Description:

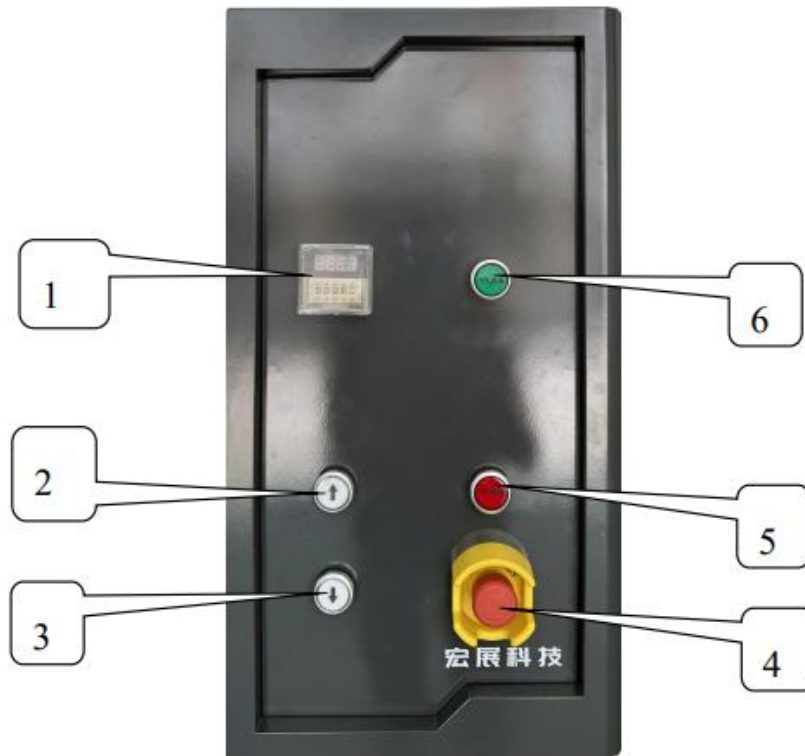
1. Front and side of the machine



Number	Name	Illustration
1	Three color lights	Green running, yellow standby, red fault
2	The control panel	Operation panel for machine operation
3	Scale	To observe of the current water level by the scale
4	Hanging basket	Product mounting bracket
5	Electric winches	For lifting and lowering baskets

Lab Companion

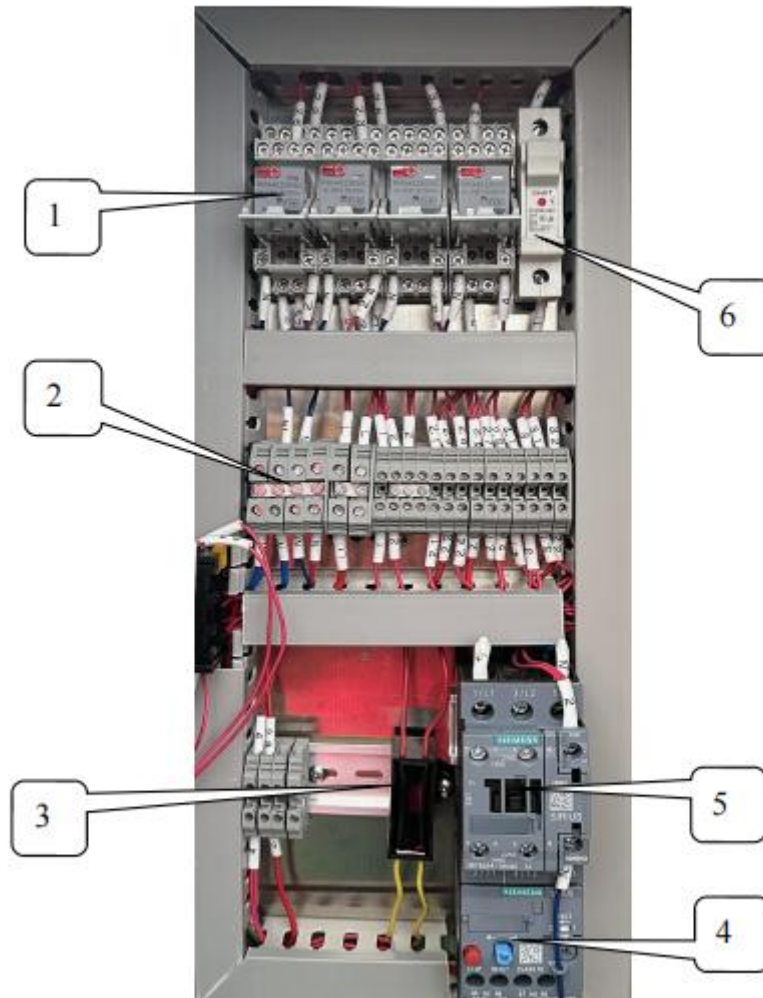
2. Control panel



Number	Name	Illustration
1	Timer	Setting the test time
2	Electric winch control	Upward arrow for lifting basket
3	Electric winch control	Downward arrow for lowering basket
4	Scram switch	Used to connect the device and cut off the power supply
5	Water replenishment switch	Press it and the device starts replenishing water
6	Timing switch	Press it and the device starts timing

Lab Companion

3. Power distribution room



Number	Name	Number	Name
1	Intermediate relay	4	Thermal overload relay
2	Connector terminal	5	Ac contactor
3	Electric capstan capacitance	6	Fuse

Lab Companion

Test Report:

	Item	Test name	Result
Item No. 5893	1	Assembled assembly inspection	Qualified
	2	Movement sequence check	Qualified
	3	Safety protection check	Qualified
	4	Grounding conductivity check	Qualified
	5	Insulation impedance check	Qualified
	6	Labeling instructions check	Qualified